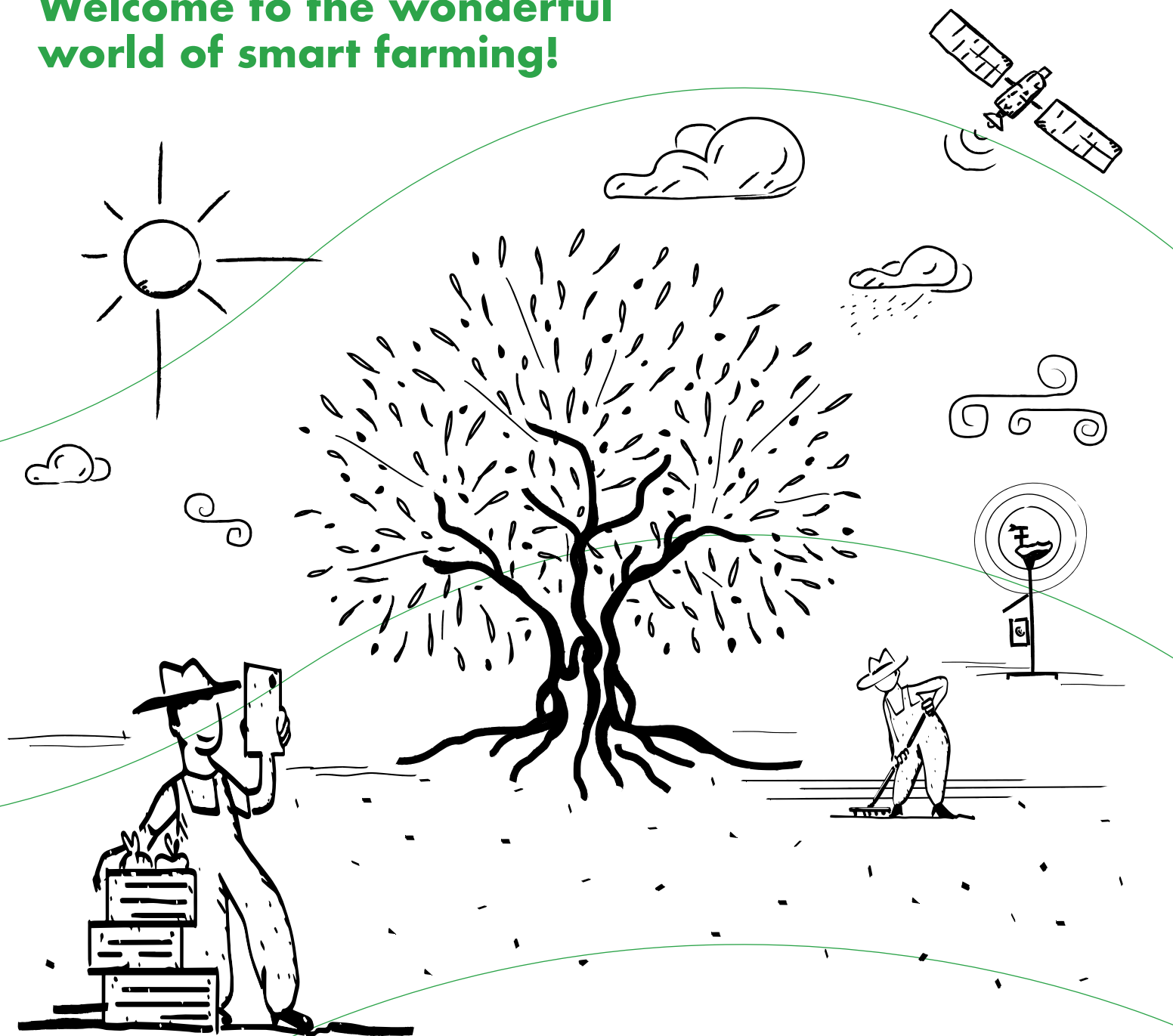


gaiasense



Welcome to the wonderful
world of smart farming!



Powered by NEUROPUBLIC



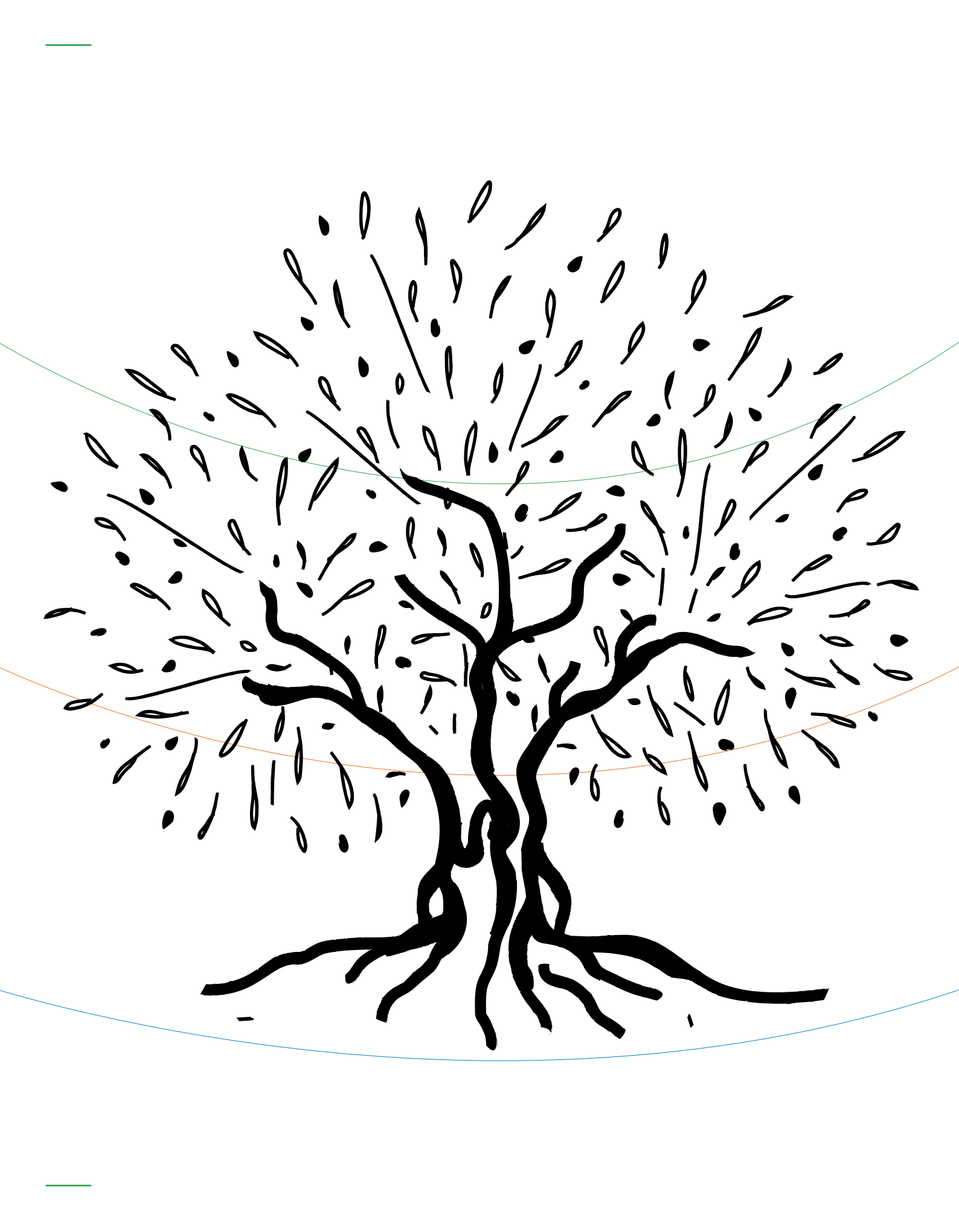
Officially certified
by OPEKEPE



The first Smart
Farming application
in Greece



100.000+
subscribers





After living for tens of thousands of years as food gatherers, humans became farmers. They were able to turn the infertile soil into crops, and also exploit and shape mother nature for their benefit.

The technological achievements of mankind have always been a landmark in the process of improving the methods used in agricultural production.

The digital era is here.

The revolution of the primary sector has begun.

Are you and your fields ready?

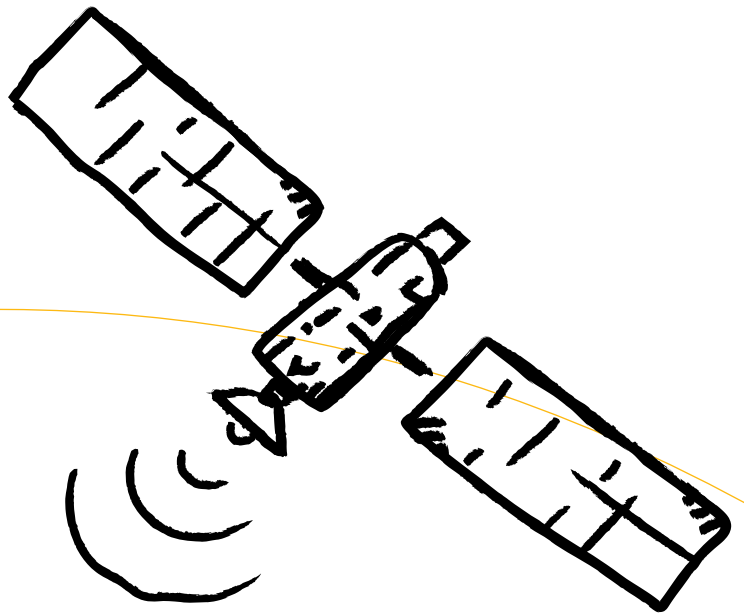
**With the new gaiasense packages
you can earn more with less!**

3 data sources

gaiasense collects valuable data in order to get better, economical and more agricultural product from the Greek land.

Aerial Data

The gaiasense smart farming system collects, processes and utilizes remote sensing data for every point on the field. The information is collected from multiple monitoring systems such as satellites, drones and other aerial means, equipped with state-of-the-art image recording sensors. At the same time, the digital processing of the images is carried out in a completely automatic way for immediate visualization of the results on a map. Thus, you can obtain a detailed and up-to-date picture of the state of the plants and the soil, inch by inch.



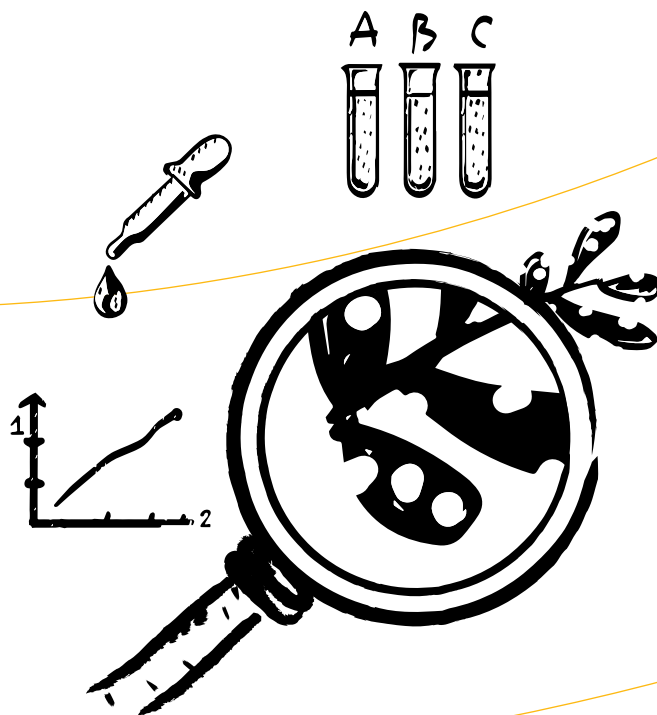


Data from the expert

The gaiasense system allows farmers' advisors and the farmers themselves to record information and actions concerning the field and the crop, such as daily farming operations. Thus, you can get a complete and detailed picture of the farm that contributes significantly to the making of decisions and rationalization of the production process.

Data from the station

The gaiasense system offers valuable information, as it records, analyses and interprets ground and atmospheric data in specific locations in the fields, continuously, in every moment. This data is collected by the telemetric agrometeorological stations of the system, which are installed on selected parcels of land, representing each crop of an entire region. This way a complete technological system is created monitoring the environmental parameters that are affecting crops.



gaiasense app

Entering the digital era

The opportunities of gaiasense are in your hands. Thanks to the gaiasense app, the first Greek smart farming application for mobile phones that provides you with all the information you need about your field and crops.

The gaiasense app, which has been officially certified by OPEKEPE (the Greek Payment Authority of Common Agricultural Policy (C.A.P.) Aid Schemes), helps you to enter the digital era of agriculture. That's why we paid special attention to both the design of the app and its content. We built simple and easy-to-understand functions, that leverage all of our vast scientific and technological knowledge and provide you with valuable information about each of your parcels of land. We created useful tools with indicators and charts, so you can make your work easier and more efficient. We've added digital guides, news, and alerts so you can be instantly updated on production issues simply with a glance on your mobile phone. It's no coincidence that the gaiasense app has been trusted by more than 100,000 subscribers so far.*

With gaiasense app, it's like your parcel is equipped with:

- An agrometeorological station
- An expert agronomist who visits it regularly
- A team of scientists providing advice

And most importantly: all of those only for a small annual subscription. This is the comparative advantage of gaiasense and that's why it has been described some years now as a pan-European innovation.

Why is it worth having the gaiasense app on your mobile?

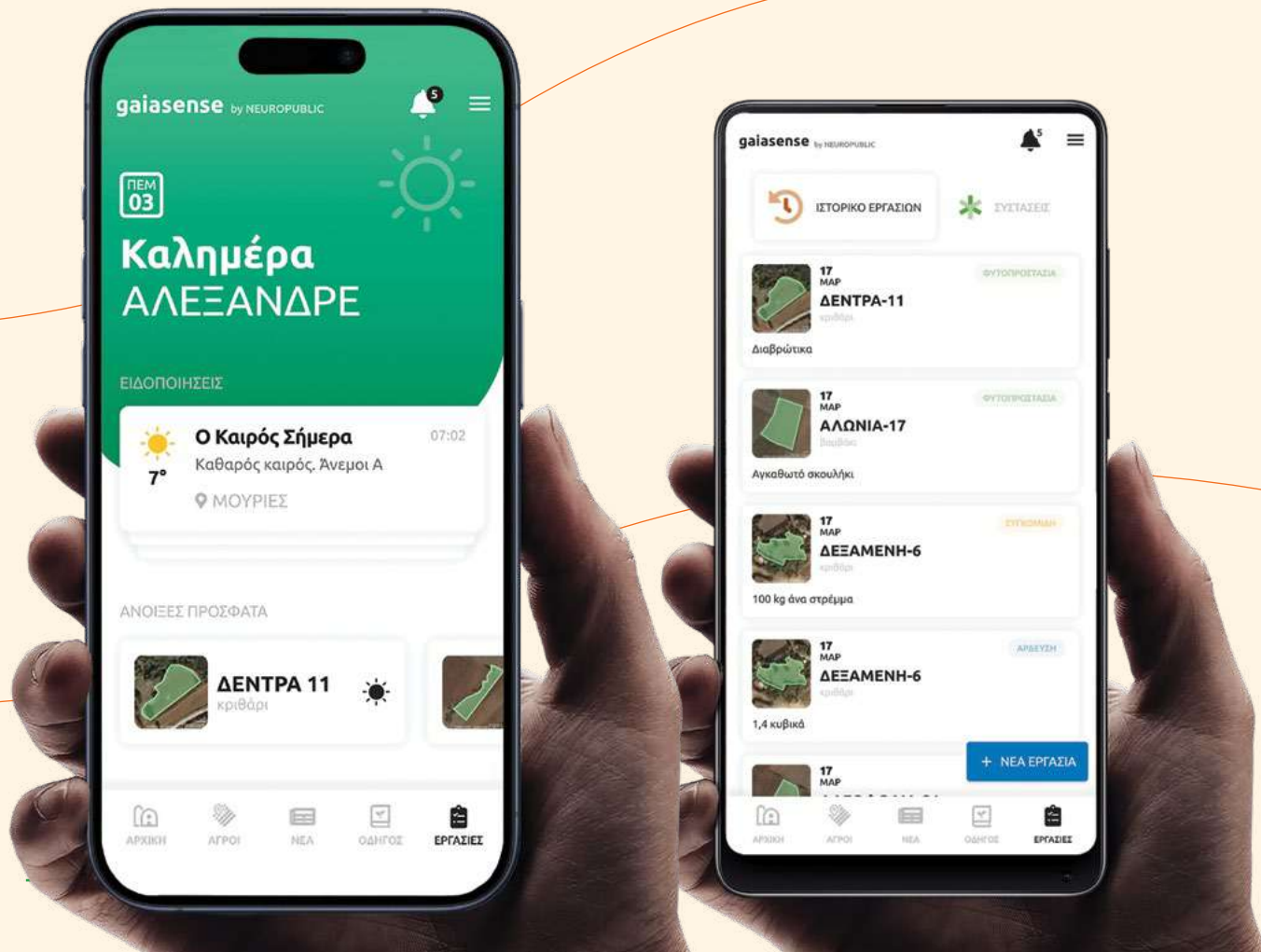


Get personalized nutrition advice for your field and become «greener»

Calculate the needs of your crop in nutrients, get personalized nutrition advice and take advantage of any possible EU or state funding opportunities.

All the work in the field, directly in your hand!

Real-time digital diary for all your field work: irrigation, plant protection, fertilization, harvesting, crop care and soil management.



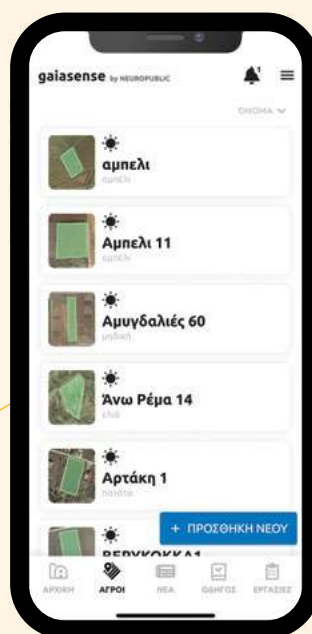


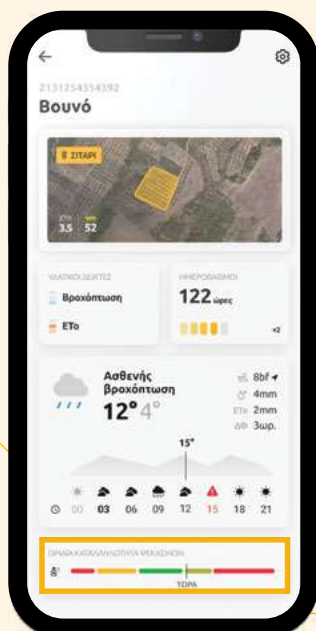
Improved organization, more free time

Now, every crop and every field is literally in your hands! Easily and quickly, from your mobile phone, you can name each parcel of land a name, area and type of crop, but also change its dimensions and boundaries at any time.

Weather forecast for your specific area. Not for the whole region

Detailed and timely information about the weather and notifications about extreme weather phenomena, so that you have time to deal with them in the best way.



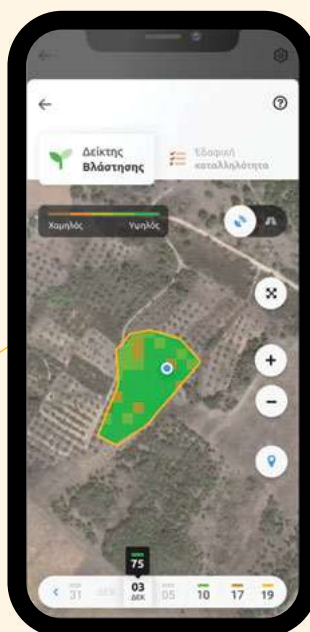


**Watch your crop grow,
without any hassle**

“Spray” at the right time

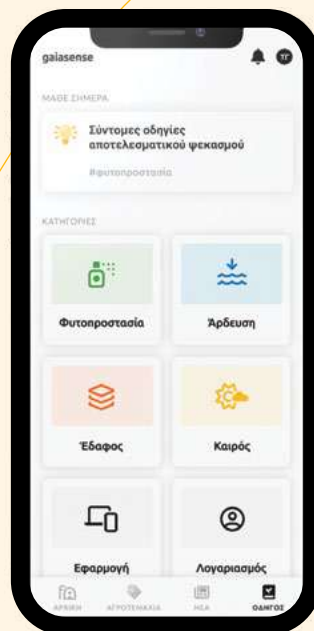
Specialized information and notifications for each parcel, enable you to spray at the right timing when the weather conditions allow it. As a result, you have greater efficiency and better products.

Monitor the NDVI vegetation index and identify potential problems in plant growth without having to visit the field. No hassle. From your mobile phone.



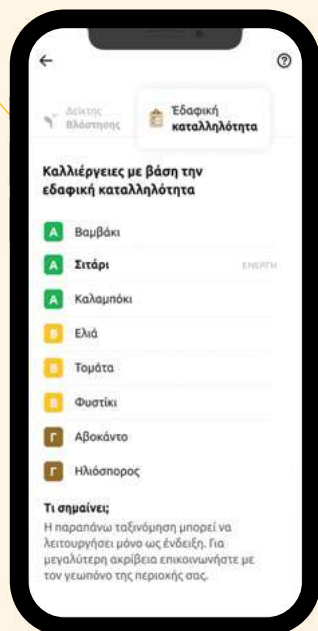
Water availability indexes for better irrigation

By comparing information from the water indicators for each of your parcels, you can make better decisions about irrigation. And save water.



Answers to your questions on smart farming

None of your questions that has to do with agricultural production will be left unanswered.



A network of journalists by your side constantly

The most important news about your production and subsidies, directly on your mobile screen.

Find the ideal field for your crops

Learn clearly and accurately which crops thrive in your field or which of your fields are suitable for specific crops.

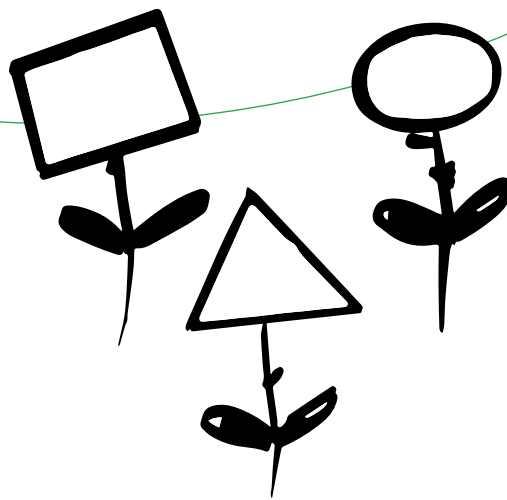


Find the gaiasense package that suits you

Are you a farmer?

You can choose between:

- gaiasense
- agro1
- agro2



Do you own an agri-food business?

You can choose between:

- business1
- business2
- business3

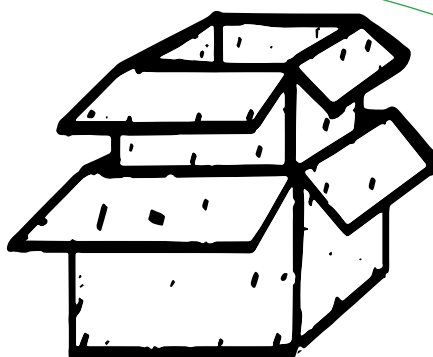




Are you an agronomist/researcher?

You can choose between:

- business1
- business2
- business3



Are you a cooperative?

You can choose between:

- business1
- business2
- business3



Are you a non-professional producer?

You can choose between:

- gaiasense1
- agro1

packages' features

Your fields

Field configuration

Work calendar

Weather forecast per field

Severe weather warnings

Suitability of sprays

Hazard warnings

Water indexes

Growth factors

Vegetation index

Soil suitability

Knowledge guide

Pan-Hellenic 5-day weather forecast

24-hour data from the pan-Hellenic agrometeorological gaiasense network

Nutrient balance

Nutrition recipe

Carbon footprint

Historic data from a gaiasense agrometeorological station

Irrigation tips

Plant protection recommendations

Soil clustering study for nutrition

Work calendar management

Input/output register

Production optimisation plan

Environmental indicators- sustainability study

Recording of on-the-spot check observations

Irrigation strategies

Plant protection instructions

Support from an agricultural consultant

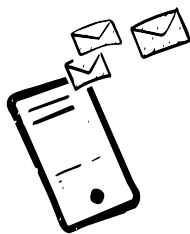
* The presence of the agronomist in the field is necessary to record the required data.

App Customer Support

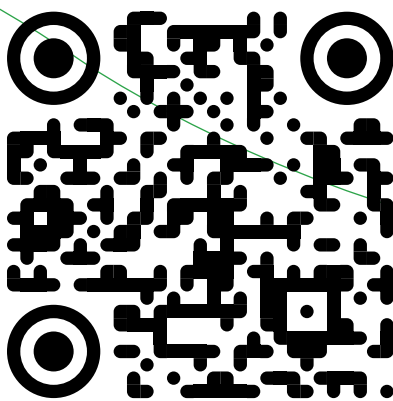
Learn more
www.gaiasense.gr

Contact support
21 6200 2400
gaiasense@neuropublic.gr

Operating hours
Monday to Friday 09:00 - 17:00



Download now
gaiasense app



Scan here